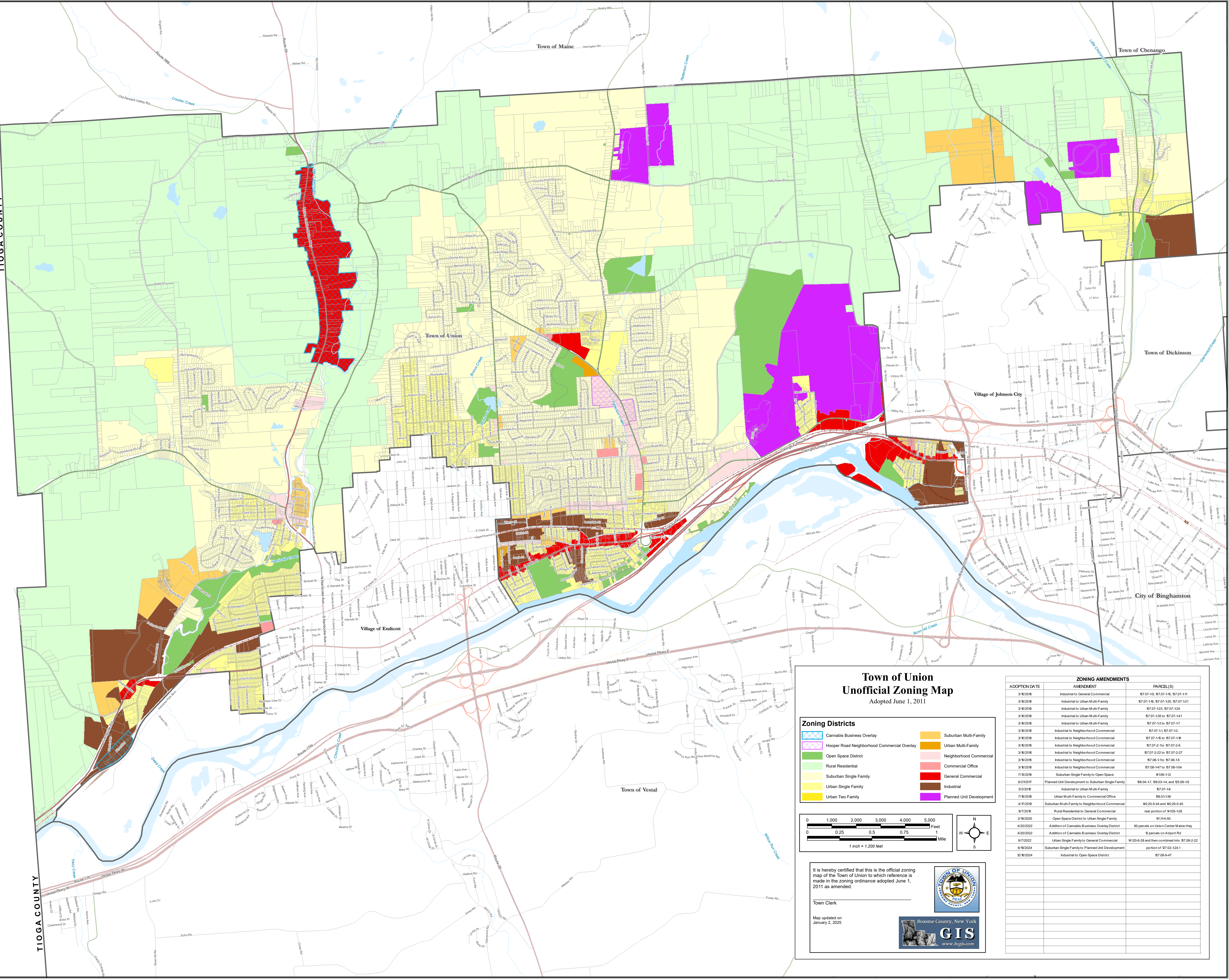


TIOGA COUNTY

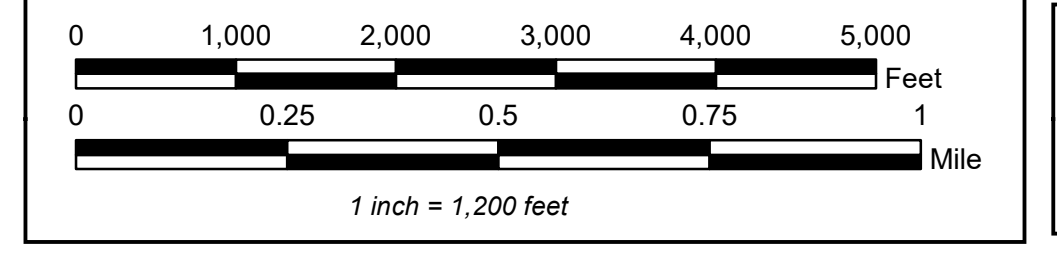
TIOGA COUNTY



Town of Union
Unofficial Zoning Map
 Adopted June 1, 2011

Zoning Districts

	Cannabis Business Overlay		Suburban Multi-Family
	Hooper Road Neighborhood Commercial Overlay		Urban Multi-Family
	Open Space District		Neighborhood Commercial
	Rural Residential		Commercial Office
	Suburban Single Family		General Commercial
	Urban Single Family		Industrial
	Urban Two Family		Planned Unit Development



It is hereby certified that this is the official zoning map of the Town of Union to which reference is made in the zoning ordinance adopted June 1, 2011 as amended.

Town Clerk
 Map updated on January 2, 2025



ZONING AMENDMENTS		
ADOPTION DATE	AMENDMENT	PARCEL(S)
3/8/2016	Industrial to General Commercial	67-07-19, 67-07-110, 67-07-111
3/8/2016	Industrial to Urban Multi-Family	67-07-19, 67-07-120, 67-07-121
3/8/2016	Industrial to Urban Multi-Family	67-07-123, 67-07-124
3/8/2016	Industrial to Urban Multi-Family	67-07-135 to 67-07-141
3/8/2016	Industrial to Urban Multi-Family	67-07-133 to 67-07-17
3/8/2016	Industrial to Neighborhood Commercial	67-07-14 to 67-07-12
3/8/2016	Industrial to Neighborhood Commercial	67-07-15 to 67-07-18
3/8/2016	Industrial to Neighborhood Commercial	67-07-2 to 67-07-2-6
3/8/2016	Industrial to Neighborhood Commercial	67-07-2-22 to 67-07-2-27
3/8/2016	Industrial to Neighborhood Commercial	67-08-110 to 67-08-115
3/8/2016	Industrial to Neighborhood Commercial	67-08-147 to 67-08-154
7/2/2016	Suburban Single Family to Open Space	1158-152
6/2/2017	Planned Unit Development to Suburban Single Family	108-04-17, 109-03-14, and 125-08-19
5/2/2018	Industrial to Urban Multi-Family	67-07-18
7/8/2018	Urban Multi-Family to Commercial Office	66-51136
4/17/2019	Suburban Multi-Family to Neighborhood Commercial	160-20-5-44 and 160-20-5-45
8/7/2019	Rural Residential to General Commercial	rural portion of 14105-126
2/8/2020	Open Space District to Urban Single Family	11114-50
4/20/2022	Addition of Cannabis Business Overlay District	90 parcels on Union Center Maine Hwy
4/20/2022	Addition of Cannabis Business Overlay District	2 parcels on Airport Rd
9/7/2022	Urban Single Family to General Commercial	1120-6-28 and then combined into 67-08-2-22
6/8/2024	Suburban Single Family to Planned Unit Development	portion of 67-02-124.1
9/8/2024	Industrial to Open Space District	67-08-9-47