

# Broome County Agricultural District No. 5

Created January 11, 1979

Including the Towns of:  
Barker, Binghamton, Chenango,  
Colesville, Conklin, Dickinson, Fenton,  
Kirkwood, Lisle, Maine, Nanticoke,  
Sanford, Triangle, Union, Vestal, Windsor

7.5' QUADRANGLES:  
Afton, Belden, Binghamton East, Binghamton West,  
Castle Creek, Chenango Forks, Deposit, Endicott,  
Greene, Gulf Summit, Harford, Lisle, Maine,  
Marathon, North Sanford, Smithville Flats,  
Whitney Point, Willet, Windsor

**Legend**

- Current Ag District #5
- 2022 Annual Additions
- 8 Year Review Additions
- Consolidated to Ag District #5
- Removed from Ag District
- County Boundary
- Municipal Boundaries
- Parcel Boundaries
- Streets
- Water

0 0.25 0.5 1 Mile  
1:24,000

Map Status: 8 year  
review - modified

Sheet # 1

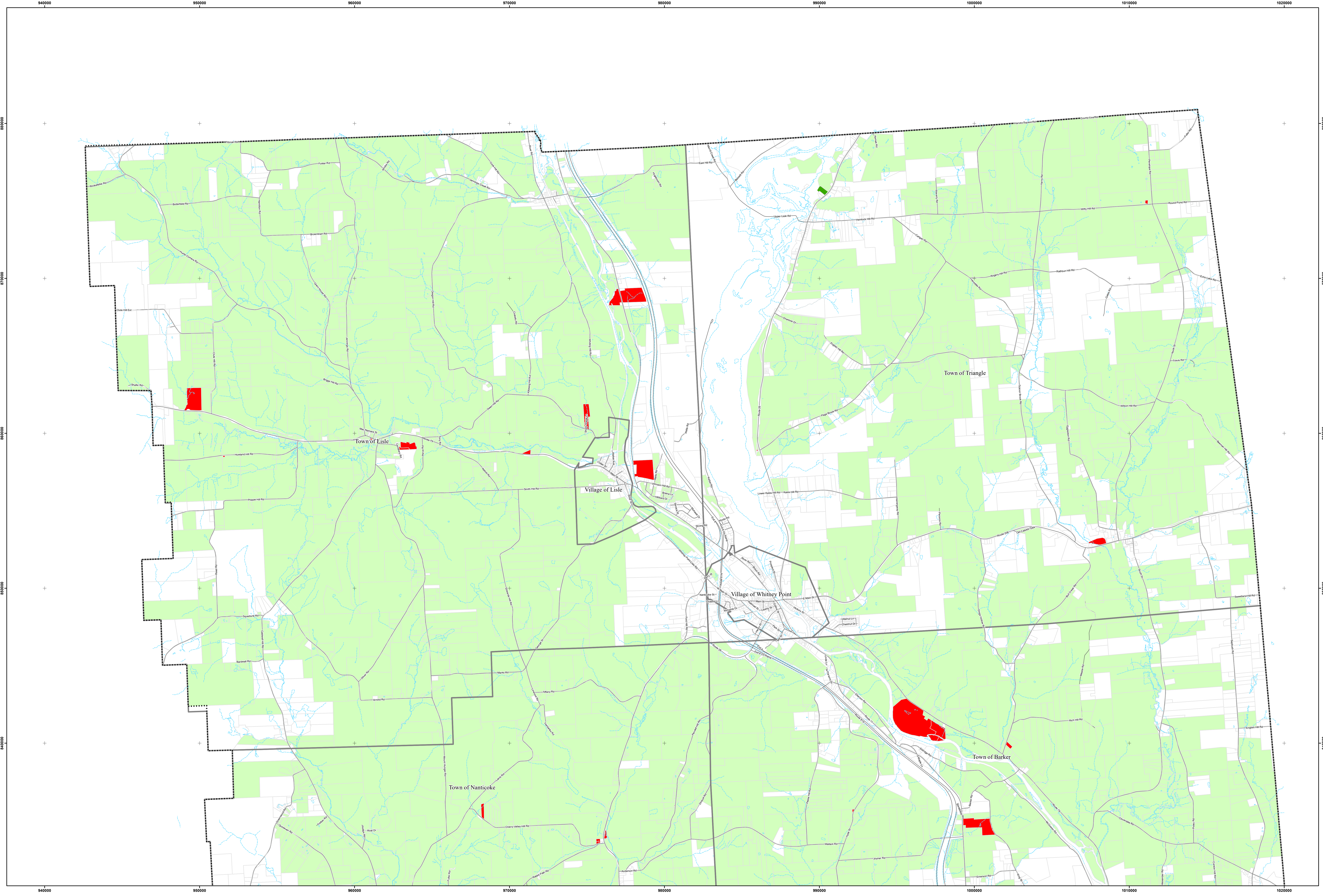
NAD 83  
State Plane  
New York Central  
Feet

Broome County, New York  
**GIS**  
www.bcgis.com  
April 13, 2022

Tax parcels derived from data provided by the Broome County  
Department of Real Property Tax Service, April, 2022.

Ag district parcels were generated using assessor special district  
codes as well as manual entry from information provided by Cornell  
Cooperative Extension.

Streets, water, and municipal boundaries from Broome County GIS.





# Broome County Agricultural District No. 5

Created January 11, 1979

Including the Towns of:  
Barker, Binghamton, Chenango,  
Colesville, Conklin, Dickinson, Fenton,  
Kirkwood, Lisle, Maine, Nanticoke,  
Sanford, Triangle, Union, Vestal, Windsor

7.5' QUADRANGLES:  
Afton, Belden, Binghamton East, Binghamton West,  
Castle Creek, Chenango Forks, Deposit, Endicott,  
Greene, Gulf Summit, Harford, Lisle, Maine,  
Marathon, North Sanford, Smithville Flats,  
Whitney Point, Willet, Windsor

**Legend**

- Current Ag District #5
- 2022 Annual Additions
- 8 Year Review Additions
- Consolidated to Ag District #5
- Removed from Ag District
- County Boundary
- Municipal Boundaries
- Parcel Boundaries
- Streets
- Water

0 0.25 0.5 1 Mile  
1:24,000

Map Status: 8 year  
review - modified

Sheet # 2

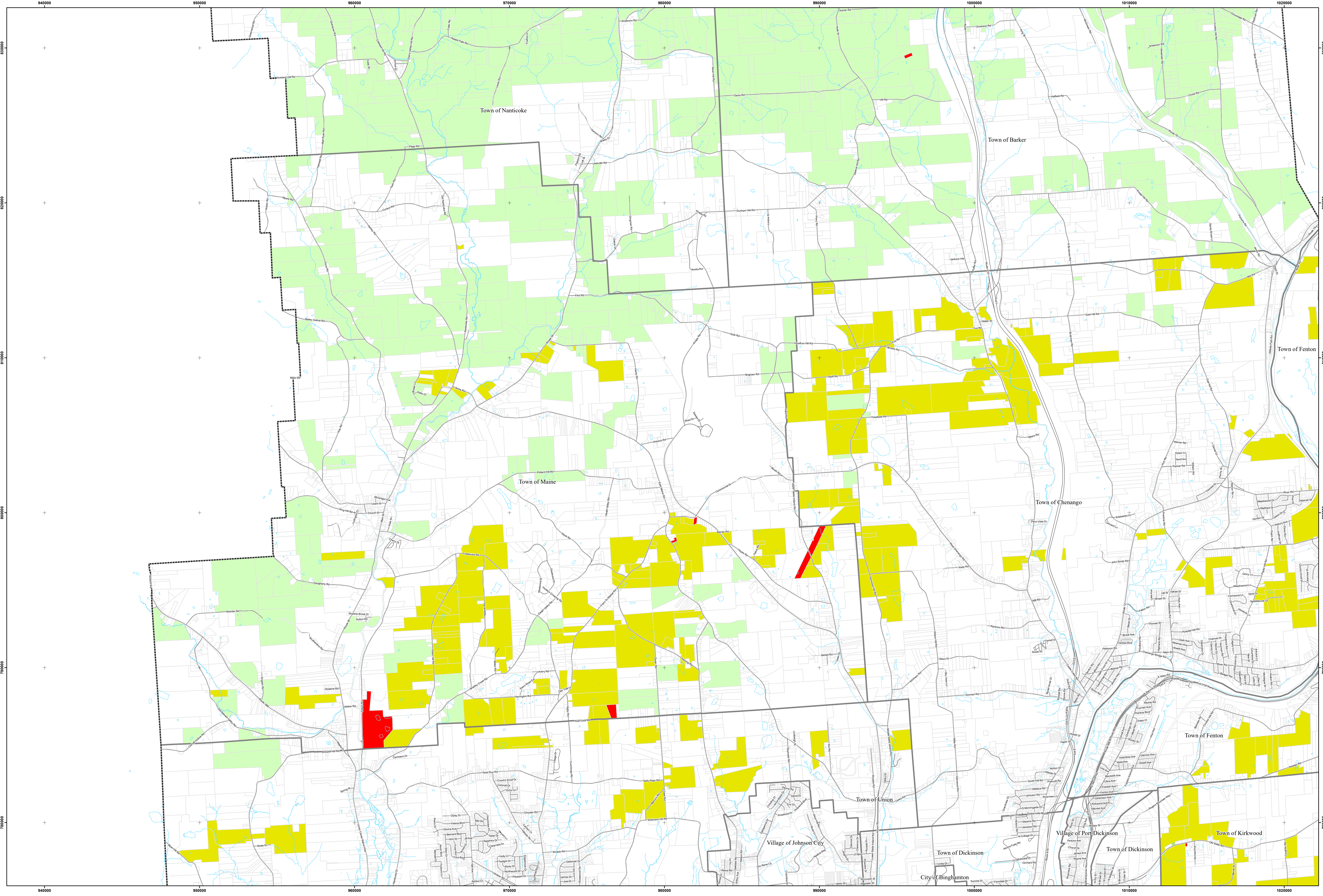
NAD 83  
State Plane  
New York Central  
Feet

Broome County, New York  
**GIS**  
www.broomegis.com  
April 13, 2022

Tax parcels derived from data provided by the Broome County  
Department of Real Property Tax Service, April, 2022.

Ag district parcels were generated using assessor special district  
codes as well as manual entry from information provided by Cornell  
Cooperative Extension.

Streets, water, and municipal boundaries from Broome County GIS.





# Broome County Agricultural District No. 5

Created January 11, 1979

Including the Towns of:  
Barker, Binghamton, Chenango,  
Colesville, Conklin, Dickinson, Fenton,  
Kirkwood, Lisle, Maine, Nanticoke,  
Sanford, Triangle, Union, Vestal, Windsor

7.5' QUADRANGLES:  
Afton, Belden, Binghamton East, Binghamton West,  
Castle Creek, Chenango Forks, Deposit, Endicott,  
Greene, Gulf Summit, Harford, Lisle, Maine,  
Marathon, North Sanford, Smithville Flats,  
Whitney Point, Willet, Windsor

**Legend**

- Current Ag District #5
- 2022 Annual Additions
- 8 Year Review Additions
- Consolidated to Ag District #5
- Removed from Ag District
- County Boundary
- Municipal Boundaries
- Parcel Boundaries
- Streets
- Water

0 0.25 0.5 1 Mile

1:24,000

Map Status: 8 year  
review - modified

Sheet # 3

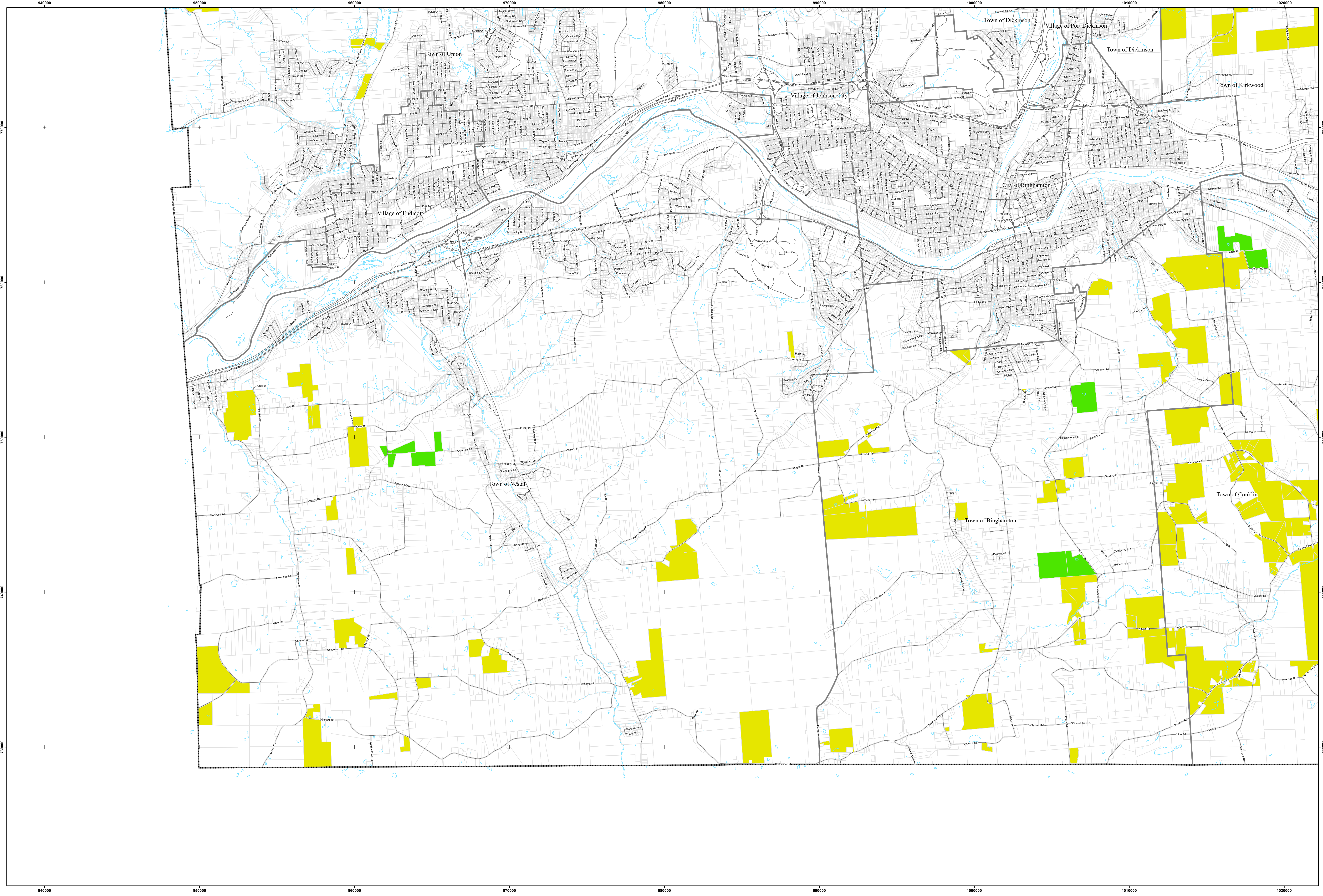
NAD 83  
State Plane  
New York Central  
Feet

Broome County, New York  
**GIS**  
www.bcgis.com  
April 13, 2022

Tax parcels derived from data provided by the Broome County  
Department of Real Property Tax Service, April, 2022.

Ag district parcels were generated using assessor special district  
codes as well as manual entry from information provided by Cornell  
Cooperative Extension.

Streets, water, and municipal boundaries from Broome County GIS.





# Broome County Agricultural District No. 5

Created January 11, 1979

Including the Towns of:  
Barker, Binghamton, Chenango,  
Colesville, Conklin, Dickinson, Fenton,  
Kirkwood, Lisle, Maine, Nanticoke,  
Sanford, Triangle, Union, Vestal, Windsor

7.5' QUADRANGLES:  
Afton, Belden, Binghamton East, Binghamton West,  
Castle Creek, Chenango Forks, Deposit, Endicott,  
Greene, Gulf Summit, Harford, Lisle, Maine,  
Marathon, North Sanford, Smithville Flats,  
Whitney Point, Willet, Windsor

**Legend**

- Current Ag District #5
- 2022 Annual Additions
- 8 Year Review Additions
- Consolidated to Ag District #5
- Removed from Ag District
- County Boundary
- Municipal Boundaries
- Parcel Boundaries
- Streets
- Water

0 0.25 0.5 1 Mile  
1:24,000

Map Status: 8 year  
review - modified

Sheet # 4

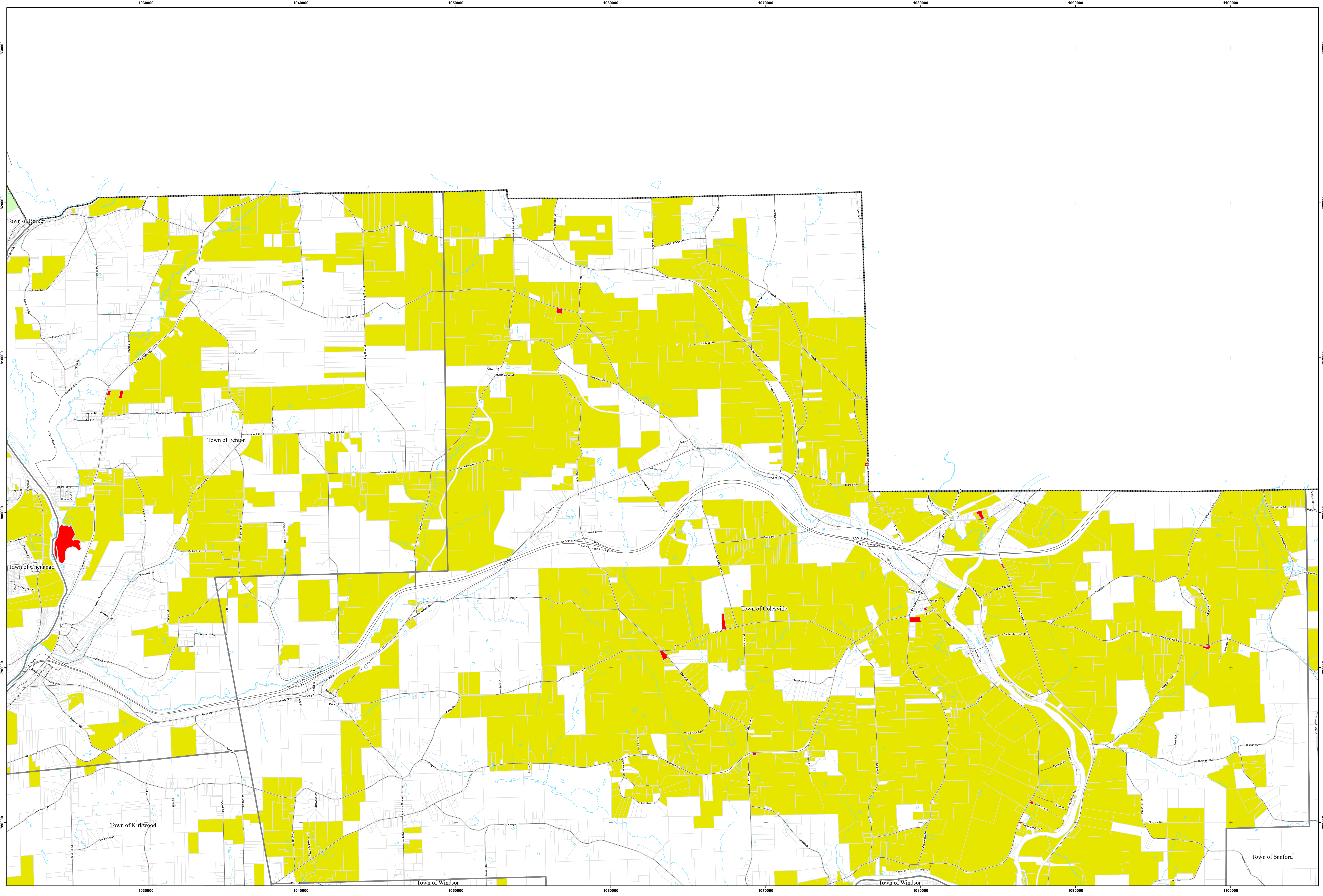
NAD 83  
State Plane  
New York Central  
Feet

Broome County, New York  
**GIS**  
www.broomegis.com  
April 13, 2022

Tax parcels derived from data provided by the Broome County  
Department of Real Property Tax Service, April, 2022.

Ag district parcels were generated using assessor special district  
codes as well as manual entry from information provided by Cornell  
Cooperative Extension.

Streets, water, and municipal boundaries from Broome County GIS.





# Broome County Agricultural District No. 5

Created January 11, 1979

Including the Towns of:  
Barker, Binghamton, Chenango,  
Colesville, Conklin, Dickinson, Fenton,  
Kirkwood, Lisle, Maine, Nanticoke,  
Sanford, Triangle, Union, Vestal, Windsor

7.5' QUADRANGLES:  
Afton, Belden, Binghamton East, Binghamton West,  
Castle Creek, Chenango Forks, Deposit, Endicott,  
Greene, Gulf Summit, Harford, Lisle, Maine,  
Marathon, North Sanford, Smithville Flats,  
Whitney Point, Willet, Windsor

**Legend**

- Current Ag District #5
- 2022 Annual Additions
- 8 Year Review Additions
- Consolidated to Ag District #5
- Removed from Ag District
- County Boundary
- Municipal Boundaries
- Parcel Boundaries
- Streets
- Water

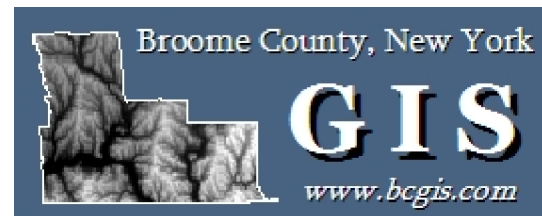
0 0.25 0.5 1 Mile

1:24,000

Map Status: 8 year  
review - modified

Sheet # 5

NAD 83  
State Plane  
New York Central  
Feet

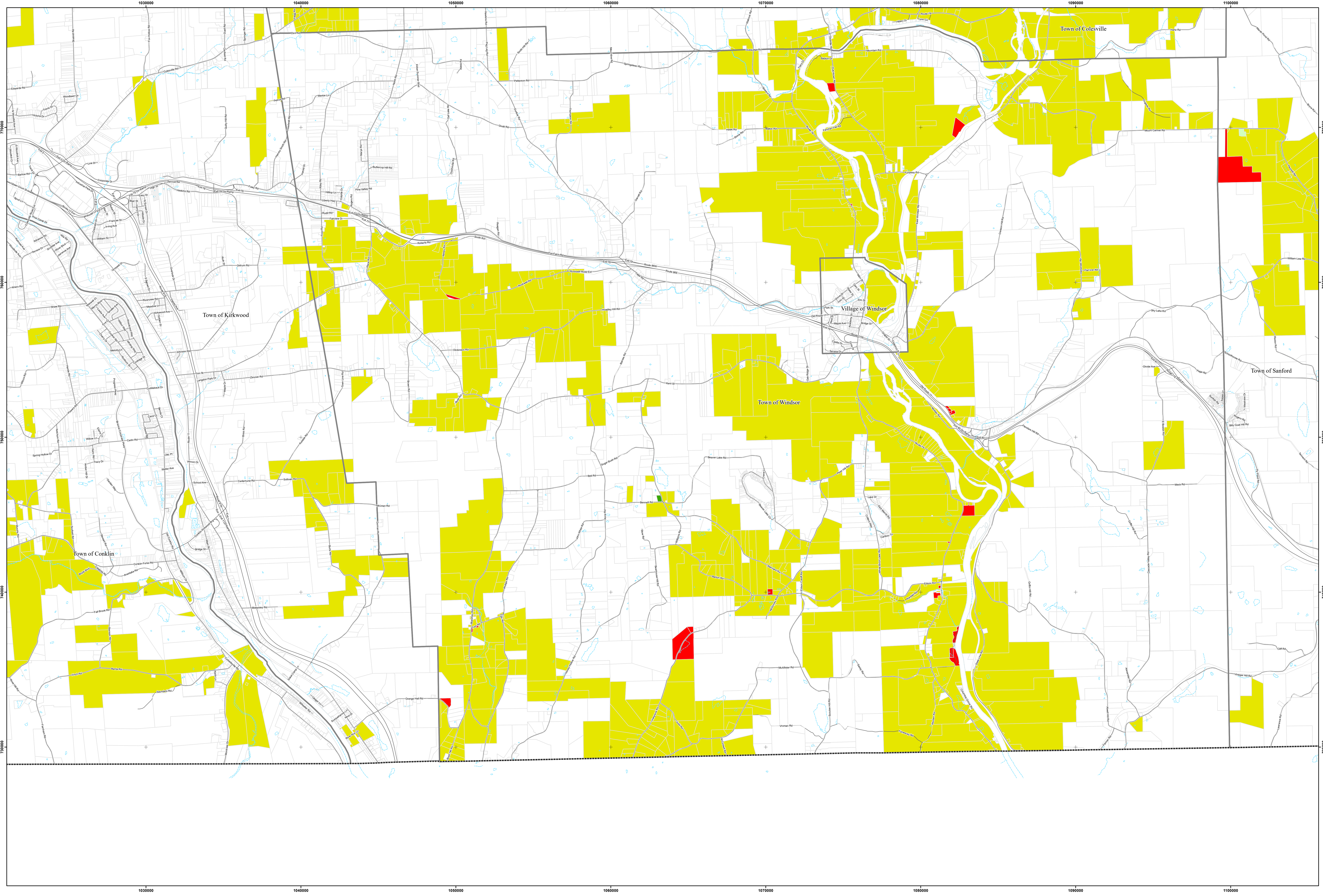


April 13, 2022

Tax parcels derived from data provided by the Broome County  
Department of Real Property Tax Service, April, 2022.

Ag district parcels were generated using assessor special district  
codes as well as manual entry from information provided by Cornell  
Cooperative Extension.

Streets, water, and municipal boundaries from Broome County GIS.





# Broome County Agricultural District No. 5

Created January 11, 1979

Including the Towns of:  
Barker, Binghamton, Chenango,  
Colesville, Conklin, Dickinson, Fenton,  
Kirkwood, Lisle, Maine, Nanticoke,  
Sanford, Triangle, Union, Vestal, Windsor

7.5' QUADRANGLES:  
Afton, Belden, Binghamton East, Binghamton West,  
Castle Creek, Chenango Forks, Deposit, Endicott,  
Greene, Gulf Summit, Harford, Lisle, Maine,  
Marathon, North Sanford, Smithville Flats,  
Whitney Point, Willet, Windsor

**Legend**

- Current Ag District #5
- 2022 Annual Additions
- 8 Year Review Additions
- Consolidated to Ag District #5
- Removed from Ag District
- County Boundary
- Municipal Boundaries
- Parcel Boundaries
- Streets
- Water

0 0.25 0.5 1 Mile  
1:24,000

Map Status: 8 year  
review - modified

Sheet # 6

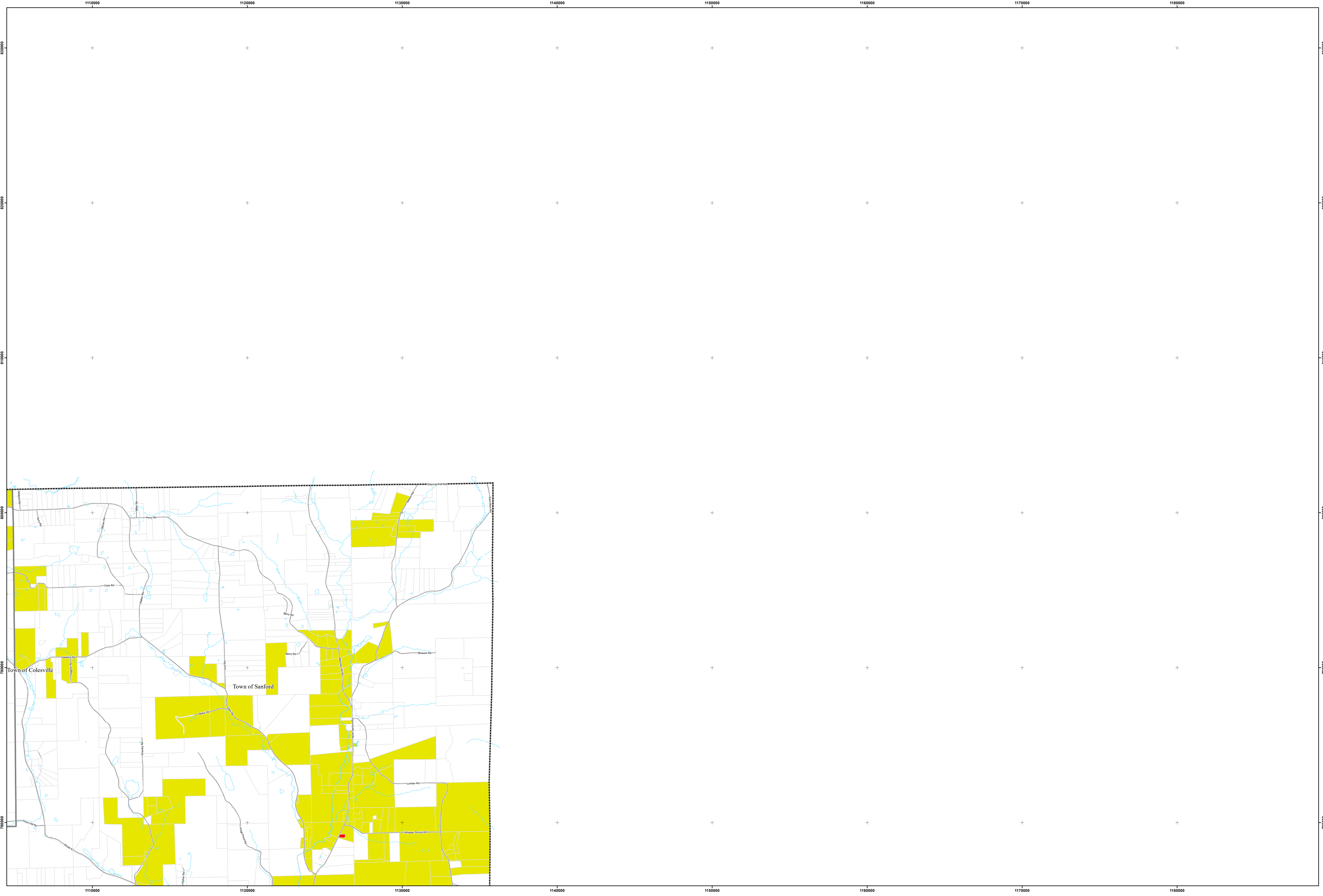
NAD 83  
State Plane  
New York Central  
Feet

Broome County, New York  
**GIS**  
www.broomegis.com  
April 13, 2022

Tax parcels derived from data provided by the Broome County  
Department of Real Property Tax Service, April, 2022.

Ag district parcels were generated using assessor special district  
codes as well as manual entry from information provided by Cornell  
Cooperative Extension.

Streets, water, and municipal boundaries from Broome County GIS.





# Broome County Agricultural District No. 5

Created January 11, 1979

Including the Towns of:  
Barker, Binghamton, Chenango,  
Colesville, Conklin, Dickinson, Fenton,  
Kirkwood, Lisle, Maine, Nanticoke,  
Sanford, Triangle, Union, Vestal, Windsor

7.5' QUADRANGLES:  
Afton, Belden, Binghamton East, Binghamton West,  
Castle Creek, Chenango Forks, Deposit, Endicott,  
Greene, Gulf Summit, Harford, Lisle, Maine,  
Marathon, North Sanford, Smithville Flats,  
Whitney Point, Willet, Windsor

**Legend**

- Current Ag District #5
- 2022 Annual Additions
- 8 Year Review Additions
- Consolidated to Ag District #5
- Removed from Ag District
- County Boundary
- Municipal Boundaries
- Parcel Boundaries
- Streets
- Water

0 0.25 0.5 1 Mile  
1:24,000

Map Status: 8 year  
review - modified

Sheet # 7

NAD 83  
State Plane  
New York Central  
Feet

Broome County, New York  
**GIS**  
www.broomegis.com  
April 13, 2022

Tax parcels derived from data provided by the Broome County  
Department of Real Property Tax Service, April, 2022.

Ag district parcels were generated using assessor special district  
codes as well as manual entry from information provided by Cornell  
Cooperative Extension.

Streets, water, and municipal boundaries from Broome County GIS.

