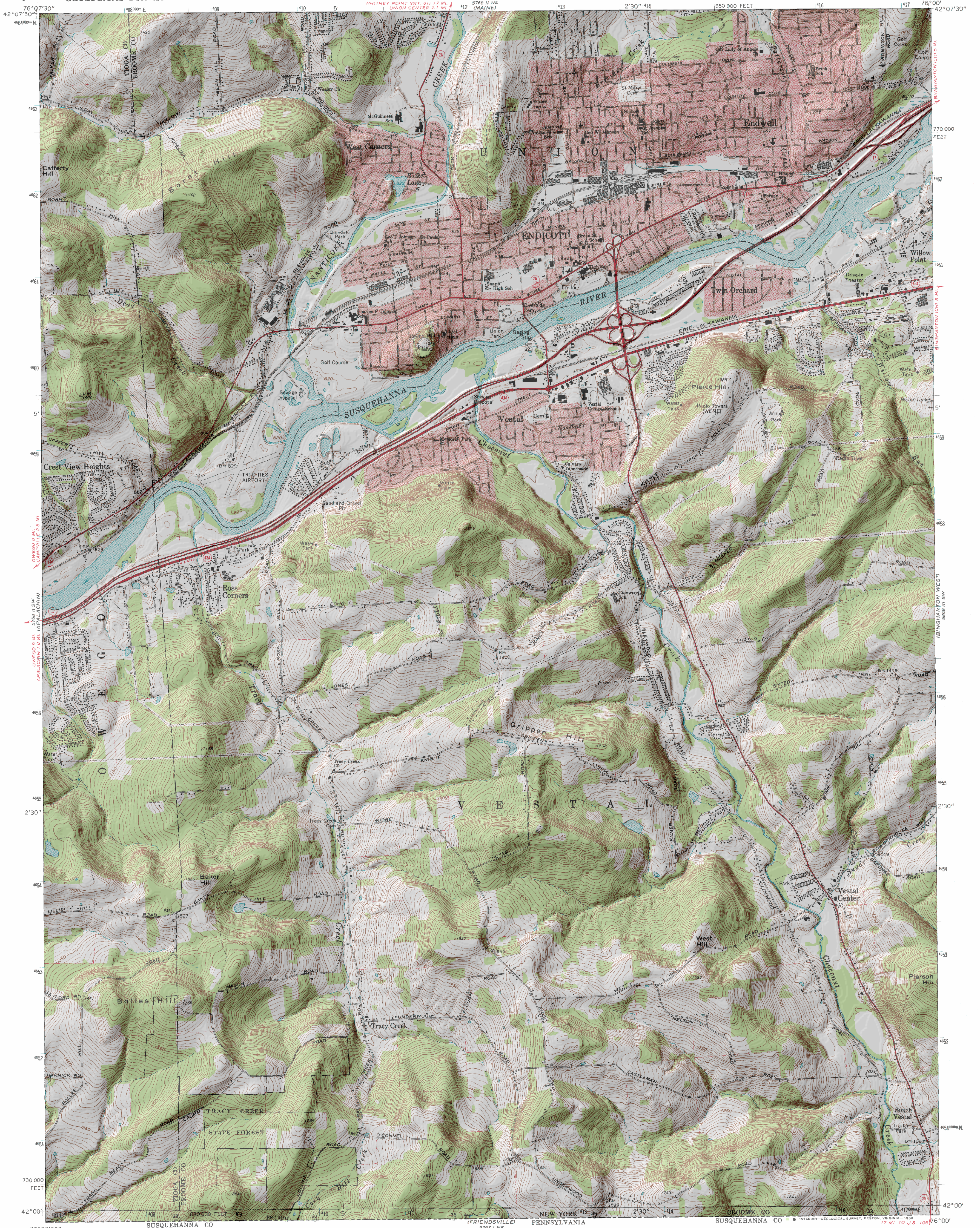
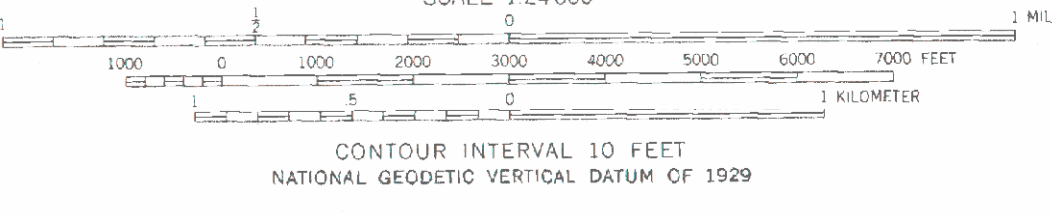
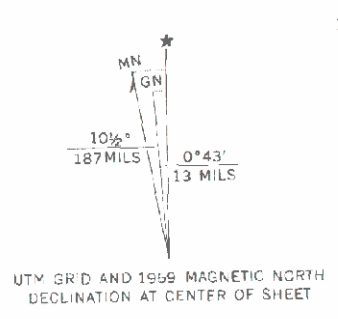


UNITED STATES
DEPARTMENT OF THE INTERIOR
GEOLOGICAL SURVEY

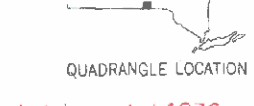
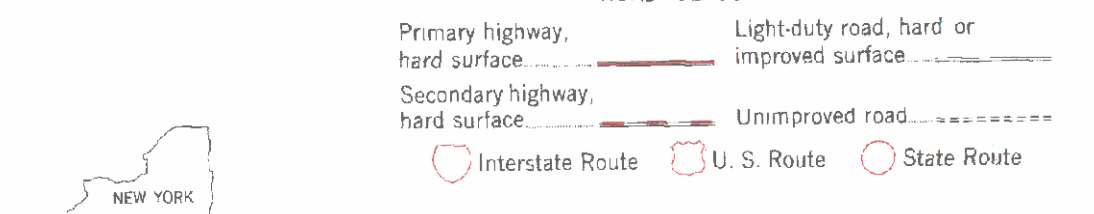
ENDICOTT QUADRANGLE
NEW YORK
7.5 MINUTE SERIES (TOPOGRAPHIC)
SE/4 ENDICOTT 15' QUADRANGLE



Mapped, edited, and published by the Geological Survey
Revised in cooperation with New York Department of Transportation
Control by USGS, USC&GS, and USCE
Topography by photogrammetric methods from aerial photographs
taken 1942, 1944, and 1948. Field checked 1956. Revised from aerial
photographs taken 1968. Field checked 1969
Polyconic projection, 1927 North American datum
10,000-foot grid based on New York coordinate system,
central zone
1000 meter Universal Transverse Mercator grid ticks,
zone 18, shown in blue
Fine red dashed lines indicate selected fence and field lines where
generally visible on aerial photographs. This information is unchecked
Red tint indicates areas in which only landmark buildings are shown



CONTOUR INTERVAL 10 FEET
NATIONAL GEODETIC VERTICAL DATUM OF 1929



Map photoinspected 1976
No major culture or drainage changes observed

ENDICOTT, N. Y.
SE/4 ENDICOTT 15' QUADRANGLE
42076-A1-TF-024

1969
PHOTOINSPECTED 1976
DMA 5768 II SE-SERIES V821

To place on the predicted North American Datum 1983
move the projection lines 4 meters south and
29 meters west as shown by dashed corner ticks

THIS MAP COMPLIES WITH NATIONAL MAP ACCURACY STANDARDS
FOR SALE BY U.S. GEOLOGICAL SURVEY
DENVER, COLORADO 80225, OR RESTON, VIRGINIA 22092
A FOLDER DESCRIBING TOPOGRAPHIC MAPS AND SYMBOLS IS AVAILABLE ON REQUEST