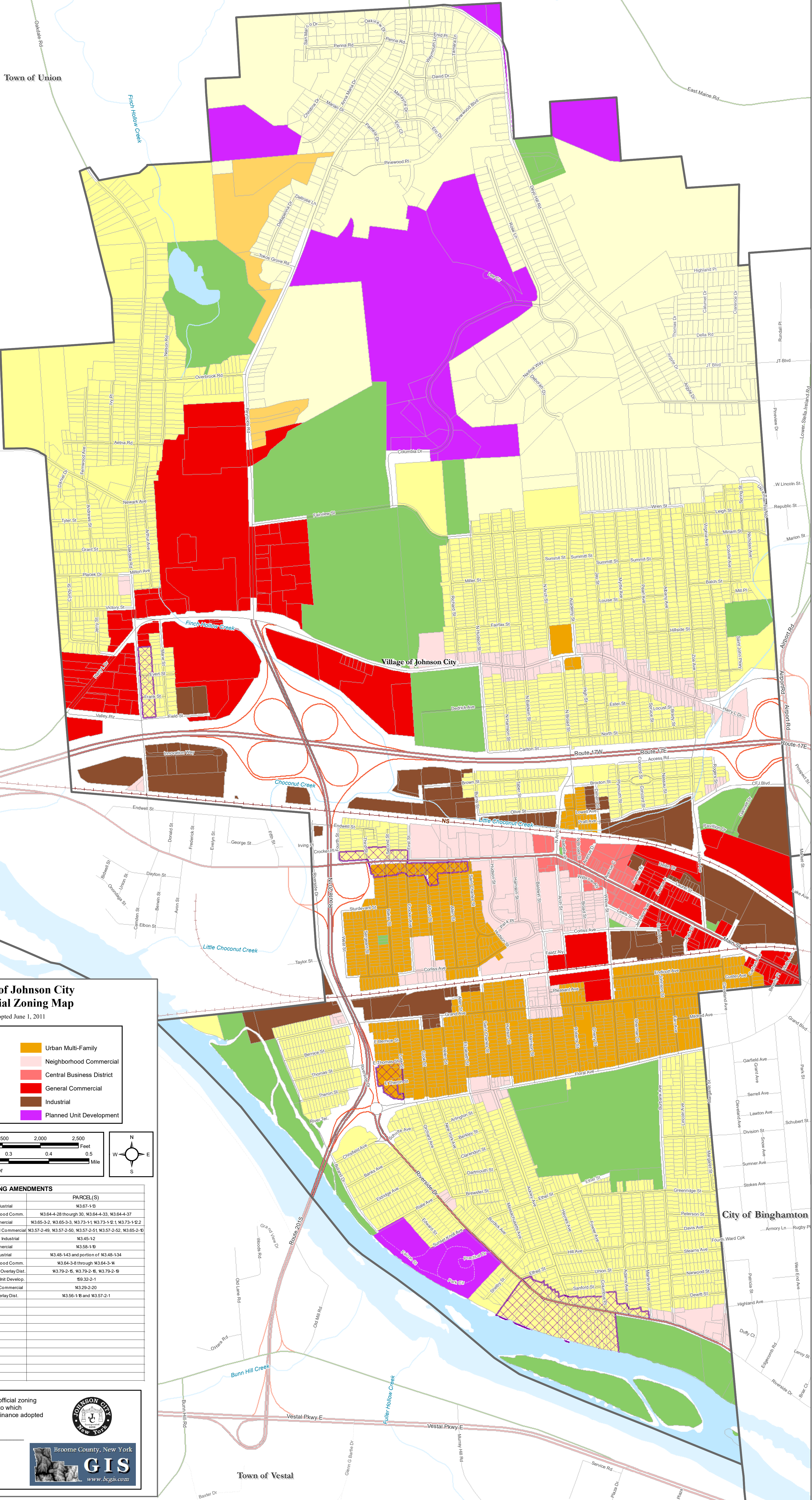


Town of Union

East Maine Rd

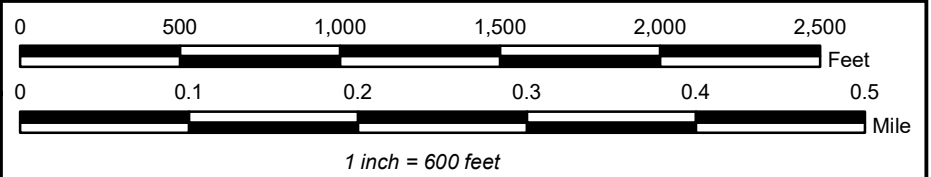


Village of Johnson City Unofficial Zoning Map

Adopted June 1, 2011

Zoning Districts

- Office Overlay District
- Open Space District
- Rural Residential
- Suburban Single Family
- Urban Single Family
- Suburban Multi-Family
- Urban Multi-Family
- Neighborhood Commercial
- Central Business District
- General Commercial
- Industrial
- Planned Unit Development

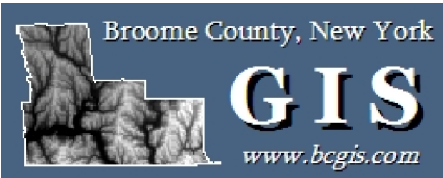


ZONING AMENDMENTS

ADOPTION DATE	AMENDMENT	PARCEL(S)
1/26/2015	General Commercial to Industrial	13367-1-B
2/19/2015	Urban Multi-Family to Neighborhood Comm.	13364-4-28 through 30, 13364-4-33, 13364-4-37
7/21/2015	Industrial to General Commercial	13365-3-2, 13365-3-3, 13373-1-1, 13373-1-2, 13373-1-2-2
7/21/2015	Central Business Dist. to General Commercial	13357-2-49, 13357-2-50, 13357-2-51, 13357-2-52, 13365-2-1
1/3/2017	Neighborhood Commercial to Industrial	13345-1-2
8/7/2018	Industrial to General Commercial	13358-1-B
1/5/2019	Urban Single Family to Industrial	13348-1-43 and portion of 13348-1-34
12/3/2019	Urban Multi-Family to Neighborhood Comm.	13364-3-8 through 13364-3-14
12/17/2019	Urban Multi-Family only to Office Overlay Dist.	13379-2-5, 13379-2-6, 13379-2-8
3/3/2020	Urban Single Family to Planned Unit Develop.	15932-2-1
3/3/2020	Urban Single Family to General Commercial	13329-2-20
7/21/2020	Removed from the Office Overlay Dist.	13356-1-B and 13357-2-1

It is hereby certified that this is the official zoning map of the Village of Johnson City to which reference is made in the zoning ordinance adopted June 1, 2011 as amended.

Village Clerk



Map updated on November 26, 2020

City of Binghamton

Town of Vestal