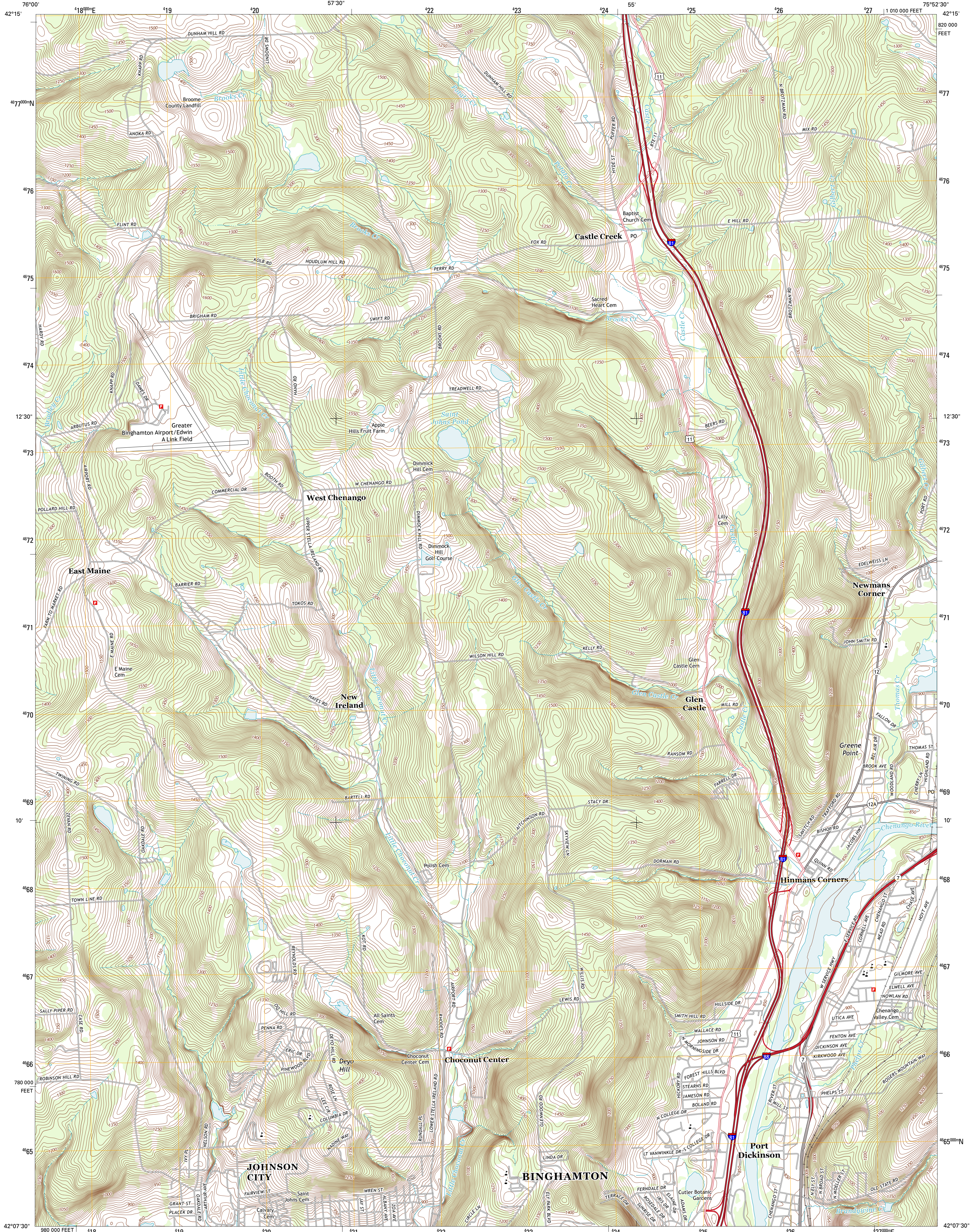




U.S. DEPARTMENT OF THE INTERIOR
U. S. GEOLOGICAL SURVEY

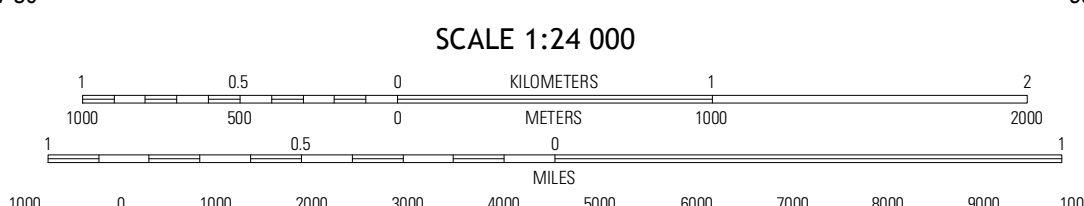
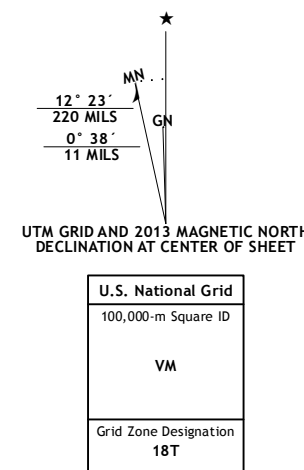


CASTLE CREEK QUADRANGLE
NEW YORK-BROOME CO.
7.5-MINUTE SERIES



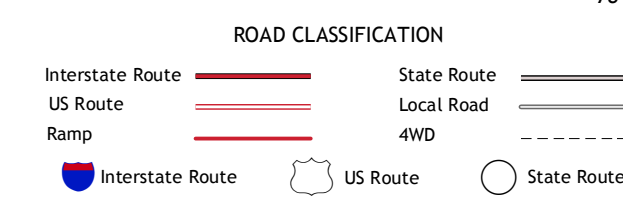
Produced by the United States Geological Survey
North American Datum of 1983 (NAD83)
World Geodetic System of 1984 (WGS84). Projection and
1,000-meter grid: Universal Transverse Mercator, Zone 18T
10,000-foot ticks: New York Coordinate System of 1983 (central
zone)

Imagery.....NAIP, May 2011 - July 2011
Roads.....©2006-2012 TomTom
Names.....©2006-2012 TomTom
Hydrography.....National Hydrography Dataset, 2011
Contours.....National Elevation Dataset, 1998
Boundaries.....Census, IBC, USGS, 1972 - 2012



QUADRANGLE LOCATION

Lake	Whitney Point	Greene
Maine	Castle Creek	Chenango Forks
Endicott	Binghamton West	Binghamton East



CONTOUR INTERVAL 10 FEET
NORTH AMERICAN VERTICAL DATUM OF 1988

This map was produced to conform with the
National Geospatial Program US Topo Product Standard, 2011.
A metadata file associated with this product is draft version 0.6.7

CASTLE CREEK, NY
2013